

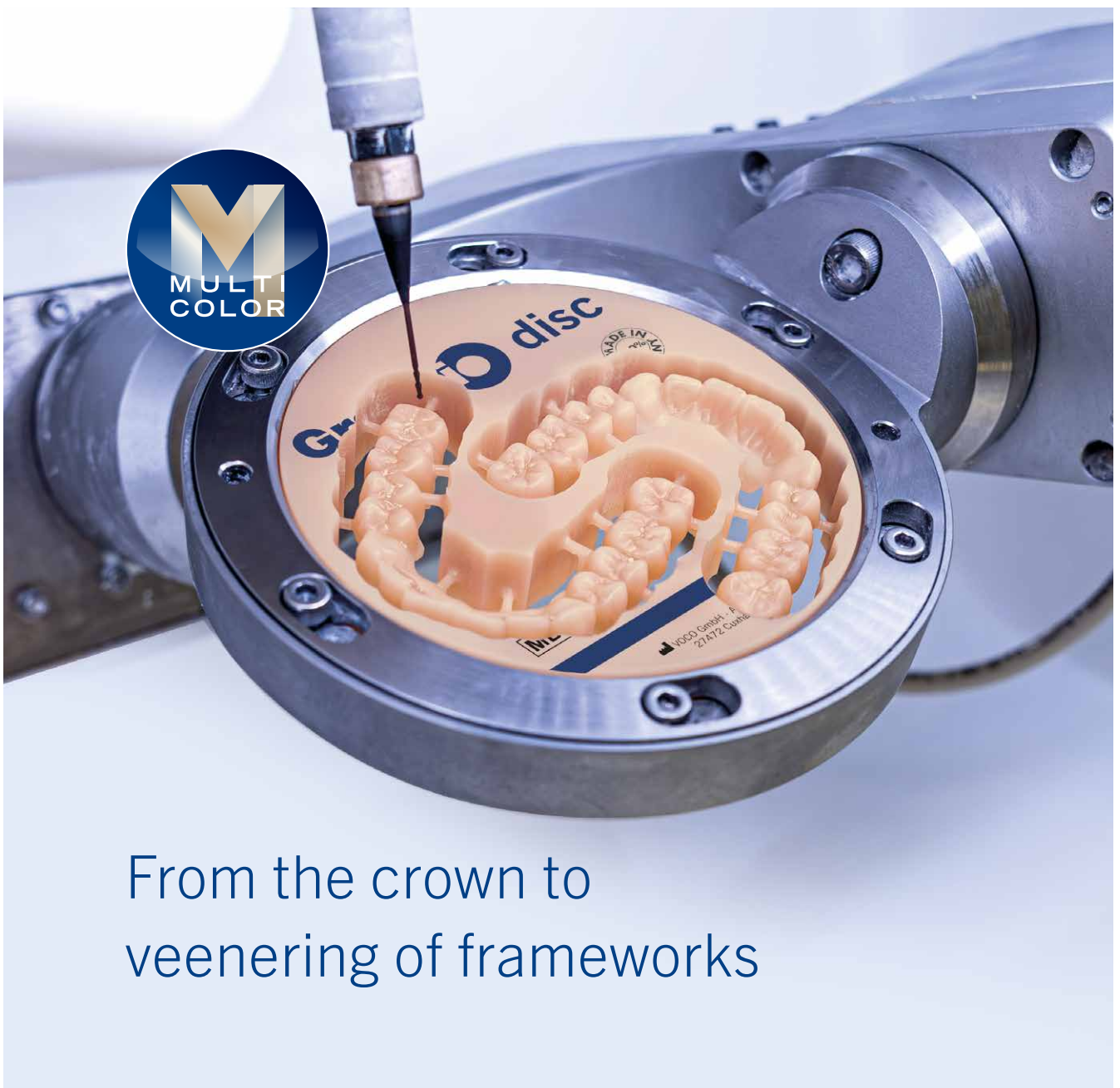
voco

DIGITAL SOLUTIONS

Very close to the natural tooth
Nano-ceramic hybrid material
Grandio disc for permanent restorations

Aesthetic and precise
CediTEC system for the creation of individual dentures

Perfectly combined
V-Print splint 2.0 – High impact resistance combined with high flexural strength



From the crown to
veneering of frameworks

Grandio disc & Grandio blocs

Available in
18 mm, 15 mm
and 12 mm



Longevity meets natural appearance:
for aesthetic restorations

VOCO's nano-ceramic hybrid CAD/CAM material is used for the production of permanent single-tooth restorations or veneering of frameworks. Grandio disc scores with tooth-like properties in terms of elasticity, strength and low abrasion. Therefore, Grandio disc is superior to conventional zirconia ceramics and is the material of choice for indirect restorations.



Grandio disc is suitable for:

- Inlays / Onlays / Veneers
- Crowns of single teeth
- Implant-supported crowns
- Framework-supported veneers



Grandio disc multicolor

1 × 18 mm (ø 98 mm)

A1	REF 6305
A2	REF 6306
A3	REF 6307
A3.5	REF 6308
B1	REF 6309
C2	REF 6310



For more presentations and shades, scan the QR code or visit www.voco.dental



Grandio blocs

5 × no. 14L LT/HT

Grandio blocs

5 × no. 12 LT/HT

Grandio disc multicolor

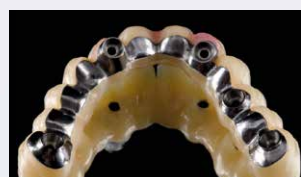
1 × 15 mm (ø 98 mm)

A1	REF 6216
A2	REF 6217
A3	REF 6218
A3.5	REF 6219
B1	REF 6220
C2	REF 6221

Grandio disc multicolor

1 × 12 mm (ø 98 mm)

A1	REF 6248
A2	REF 6249
A3	REF 6250
A3.5	REF 6251
B1	REF 6252
C2	REF 6253



Source: Alessandro Giacometti, Italy

V-Print

3D printing materials – with added value

With the V-Print family, VOCO offers high-quality dental materials for 3D printing in practices and laboratories, which are manufactured at the headquarters in Cuxhaven. All 3D printing materials are developed by an interdisciplinary research team of dental technicians, dental engineers and chemists along the digital workflow to make your everyday work easier.

Free of charge
3D sample:

Simply scan the QR code,
select product or upload your own
STL file and test it.



4+1
for free¹
Valid for
all V-Print
materials



V-Print c&b temp (MD IIa)

Long-term temporaries like crowns, bridges and mock-ups

- A1 REF 6897
- A2 REF 6898
- A3 REF 6899
- A3.5 REF 6900
- B1 REF 6901
- BL REF 6902

500 g bottle

V-Print model 2.0 beige (Tec Resin)

Dental working and presentation models

1000 g bottle

REF 6128



V-Print dentbase pink (MD IIa)

Removable denture bases, ideal addition to CediTEC DT

1000 g bottle

REF 6048



V-Print Try-In beige (MD IIa)

Try-ins for full and partial dentures, transfer and grinding templates, correction and occlusal impressions

1000 g bottle

REF 6049



V-Print tray green (MD I)

Individual impression and function trays, bases for bite templates and wax assemblies for full dentures, occlusal registrations

1000 g bottle

REF 6039



Speed casting
and conventional
heating

V-Print cast blue (Tec Resin)

Production of objects which can be burned out without leaving any residues for casting processes and pressing ceramics

1000 g bottle

REF 6045



V-Print splint comfort clear (MD IIa)

Therapeutic splints, auxiliary parts and functional parts for diagnostics, bleaching splints (home bleaching), palatal plates

1000 g bottle

REF 6126



V-Print splint 2.0 clear (MD IIa)

Therapeutic splints, auxiliary parts and functional parts for diagnostics, bleaching splints (home bleaching)

1000 g bottle

REF 6124



V-Print SG clear (MD IIa)

Dental drilling templates, approved for wound contact

1000 g bottle

REF 6043



V-Print IBT clear (MD I)

Orthodontic transfer splints for bracket placement

1000 g bottle

REF 6127

Trusted Partner



Validated device and software partners for our CAD/CAM materials

VOCO works together with a large number of well-known equipment and software manufacturers, to offer you a wide range of validated solutions for our additive and subtractive CAD/CAM materials. Ideal and reproducible results are the outcome of intensive cooperation. This compatibility of the printing and milling materials ensures easy and seamless integration into your daily work.

A current list of VOCO Trusted Partners can be found at www.voco.dental/systempartner

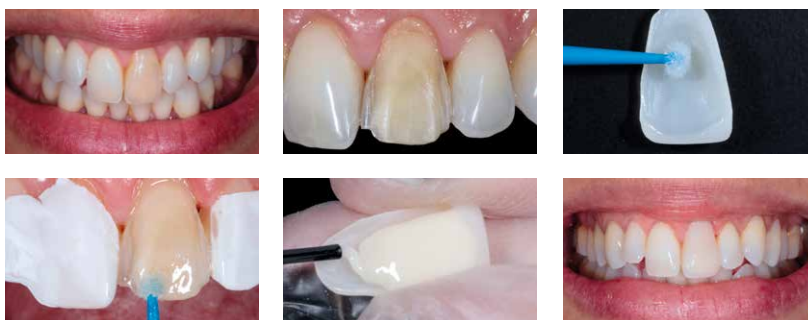
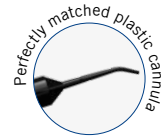


Software	Milling / Grinding	3D-print

Bifix Veneer LC

Light-curing nano-hybrid luting composite

The light-curing nano-hybrid luting composite was specially developed for permanent luting of ceramic and composite veneers, inlays and onlays. It is ideal for restoration thicknesses up to 2 mm with sufficient translucency and combines precise colour matching with optimal processing consistency.



Source: Prof. Carlos Torres, Brazil

The advantages at a glance

- Try-in pastes: The final result can be checked in advance and the exact shade can be selected
- Effortless removal of excess material: After brief partial polymerisation

Bifix Veneer set

- 3 × 2 g syringe Bifix Veneer LC
- 3 × 2.5 g syringe Bifix Veneer Try-In (bright, clear, warm)
- + accessories

REF 1428

Bifix Veneer system set

- 3 × 2 g syringe Bifix Veneer LC
- 3 × 2.5 g syringe Bifix Veneer Try-In (bright, clear, warm)
- 2 ml syringe Vococid
- 20 pcs. SingleDose Futurabond U
- 20 pcs. SingleDose Ceramic Bond
- 10 pcs. Sticky Tim
- + accessories

REF 1429

Further presentations and shades can be found under www.voco.dental

CediTEC

CAD/CAM system for the creation of removable dentures

Aesthetic, precise, individual – CediTEC is a system that combines the denture base, denture teeth and luting material under one roof. This allows quick and easy creation in just a few steps.



The advantages at a glance

- Production of individual, accurately fitting denture teeth, reproducible at any time
- High-quality materials for long and high wearing comfort
- Translucent shade and high fluorescence for natural aesthetics
- Accurate and bubble-free mixing of the luting material

Structur CAD

CAD/CAM composite for temporary restorations

Highest quality and aesthetic for long, safe wear – particularly suitable for long-term temporary and semi-permanent restorations. Structur CAD is a filled composite for the CAD/CAM process in dental practices and laboratories. After the grinding and milling process, Structur CAD has excellent edge stability and can be polished quickly and easily both intra- and extraorally. The fluorescence is similar to that of natural teeth, which helps patients to feel comfortable with temporary restorations.

The advantages at a glance

- Fast and efficient production of precision-fit temporary restorations
- Excellent edge stability
- Effortless intraoral as well as extraoral polishing and individualization
- No need to use an MMA primer



CediTEC DB Denture Base

Disc 1 × 30 mm (ø 98 mm)

pink **REF 6195**
orange-pink **REF 6197**

CediTEC DT Denture Teeth

Disc 1 × 20 mm (ø 98 mm)

A1 **REF 6085**
A2 **REF 6086**
A3 **REF 6087**
BL **REF 6088**

Set CediTEC Adhesive

1 × 80 g CediTEC Adhesive
1 × 4 ml bottle CediTEC Primer
+ accessories

REF 6082



Structur CAD Block

5 × no. 40L

A1 **REF 6076**
A2 **REF 6077**
A3 **REF 6078**

Structur CAD Disc

1 × 20 mm (ø 98 mm)

A1 **REF 6071**
A2 **REF 6072**
A3 **REF 6073**

Bifix Hybrid Abutment

with highly
opaque shades

Universal, dual-curing luting composite for
intraoral and extraoral application

For the highest demands in the laboratory – hybrid abutments unite the best of both worlds: the high fracture resistance of titanium abutments and the superior aesthetic effect of ceramic. Bifix Hybrid Abutment ensures secure luting and optimum adhesion between titanium and ceramic, for instance.

The advantages at a glance

- All-in-one – permanent luting of all known dental materials
- With Try-In pastes – precise shade simulation for hybrid abutments, abutment crowns and core treatments
- High aesthetic – the perfect masking of dark substrates with highly opaque shades



Source: Dr. Felipe Araujo, Brazil



Implant Set

10 g QuickMix syringe (universal HO)
+ 2.5 g Try-In syringe
+ 5 ml Ceramic Bond bottle
+ 5 x Futurabond U SingleDose
+ accessories

REF 2410

Syringes, colour-sorted

10 g QuickMix syringe
+ 2.5 g Try-In syringe

universal HO REF 2411
white HO REF 2412
translucent REF 2413

Ceramic Bond

Coupling agent for porcelain (incl. zirconium dioxide) and composite

Ceramic Bond is used as a coupling agent to achieve an optimal bond strength between indirect restorations made of either silicate ceramics, aluminium oxide, zirconium dioxide, metal or composite, as well as glass fibre-reinforced composite posts, on the one side and methacrylate-based luting composites on the other side.



Ceramic Bond

5 ml Flasche
REF 1106

Please contact your dental depot or your VOCO dental consultant
to order the VOCO Highlights presented here.

*Compared with individual purchase

‡After ordering and delivery of the requested quantities through the depot of your choice, you will receive an additional package directly from VOCO free of charge.
For commercial laboratories only. Errors and omissions excepted. No liability for printing errors.

VOCO GmbH
Anton-Flettner-Straße 1-3
27472 Cuxhaven
Germany

VOCO customer service
Freecall: 00 800 44 444 555
Fax: +49 4721 719-2931
service@voco.de



VOCO Knowledge & Support Center
CAD/CAM tips and information
for optimal production of digital
workpieces – register now and
take advantage of the benefits.
www.ksc.voco.dental

